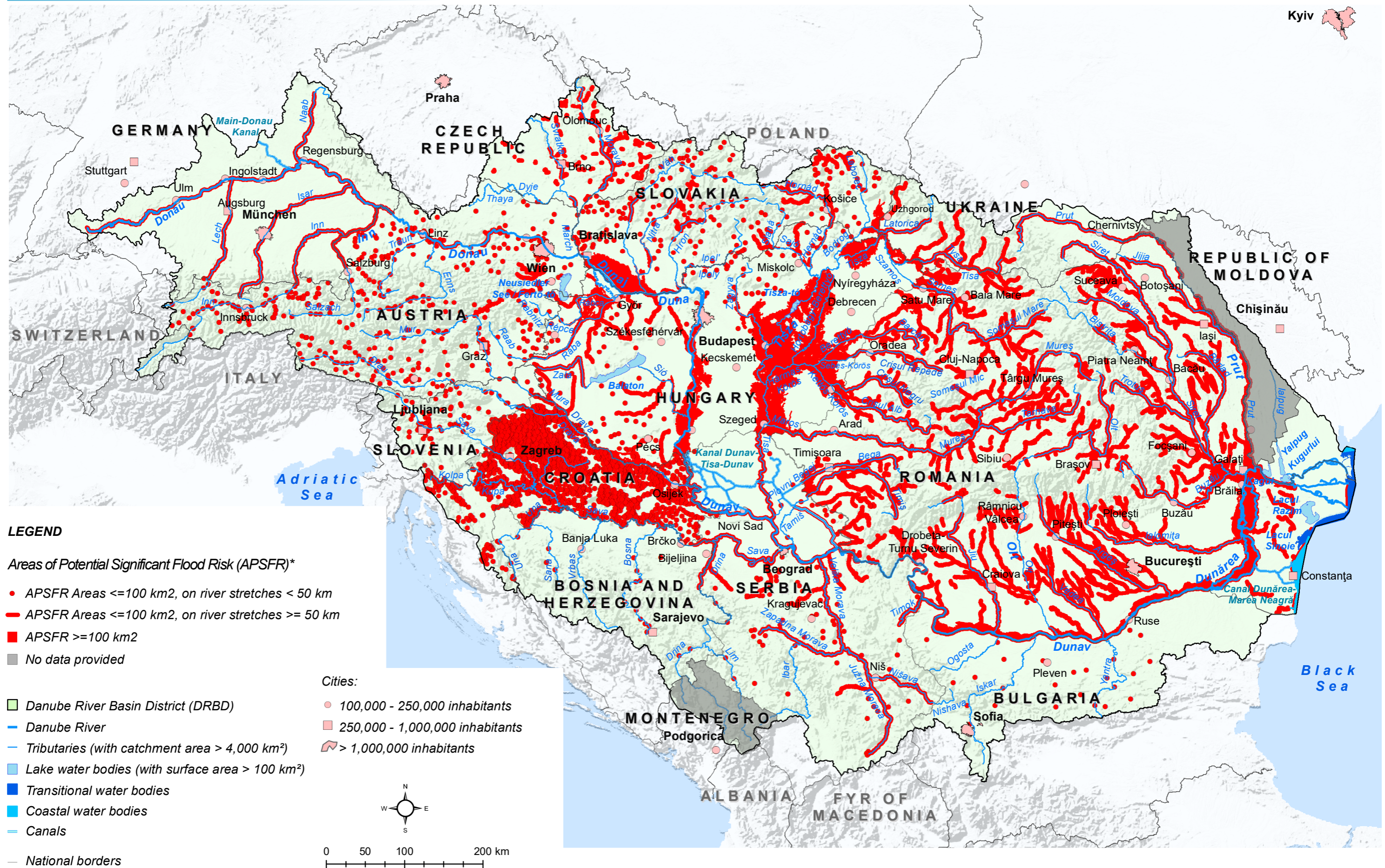


Danube River Basin District: Preliminary Flood Risk Assessment (PFRA) - 2019 data update



* The information about APSFR in Bulgaria is not final due to uncompleted activities on PFRA and APSFR designation.

This ICPDR product is based on national APSFR information provided by Contracting Parties to the ICPDR (AT, BA, BG, CZ, DE, HR, HU, RO, RS, SI, SK and UA). More details on the methodologies used for identification of APSFR at the national level and the definition of significance criteria are provided in the report "Preliminary Flood Risk Assessment in the Danube River Basin", chapter 5.1. National borders data was provided by the Contracting Parties to the ICPDR and CH; ESRI data was used for national borders of AL, ME, MK; Shuttle Radar Topography Mission (SRTM) from USGS Seamless Data Distribution System was used as a background layer; Data from the European Commission (Joint Research Center) was used for the outer border of the DRBD of AL, IT, ME and PL.

Vienna, January 2020

www.icpdr.org

ICPDR IKSD

International Commission
for the Protection
of the Danube River

Internationale Kommission
zum Schutz der Donau