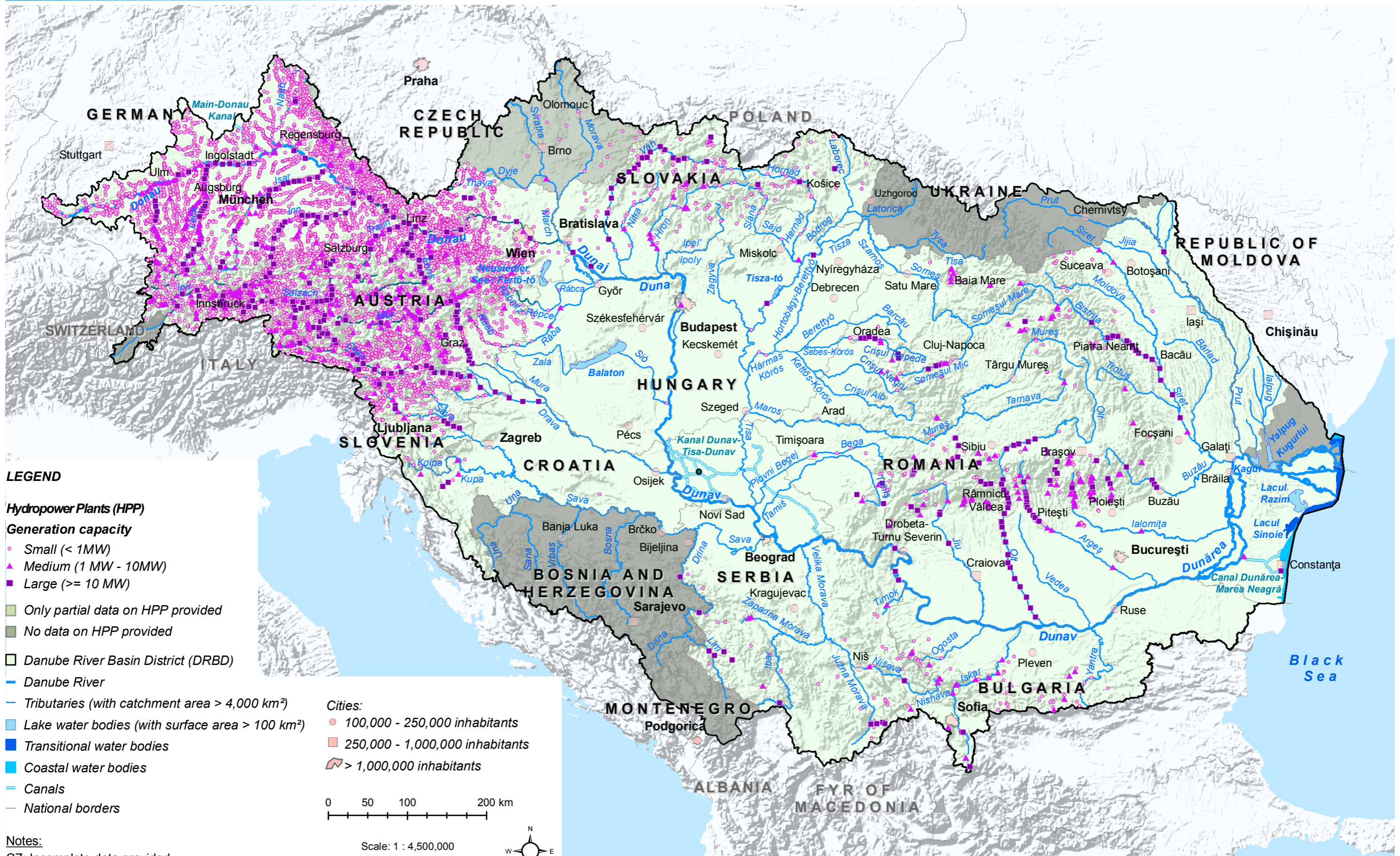


# Danube River Basin District: Hydropower Plants (HPP)



**Notes:**  
CZ: Incomplete data provided  
RO: HPP  $\geq 1$  MW are multipurpose facilities (water supply, mitigation of floods / droughts, ensuring water resources)

This ICPDR product is based on national information provided by Contracting Parties to the ICPDR (AT, BA, BG, CZ, DE, HR, HU, MD, RO, RS, SI, SK, UA). National borders data provided by the Contracting Parties to the ICPDR and CH was used; ESRI data was used for national borders of AL, ME, MK; Shuttle Radar Topography Mission (SRTM) from USGS Seamless Data Distribution System was used as topographic layer; Data from the European Commission (Joint Research Center) was used for the outer border of the DRBD of AL, IT, ME and PL. Data on HPP < 1MW for Bavaria was derived from Energie-Atlas Bayern 2.0: <http://www.energieatlas.bayern.de>

AT data provided by: IWW BOKU Habersack et al. (2012)  
Input data: HAÖ (2007), Federal states of Austria (2010/2011)  
Hydropower operators (2010-2012)

[www.icpdr.org](http://www.icpdr.org)

**icpdr iksd**

International Commission for the Protection of the Danube River  
Internationale Kommission zum Schutz der Donau

Produced by: ICPDR, Vienna, June 2014